

SERVICE MANUAL

SPLIT TYPE ROOM AIR CONDITIONER CEILING WALL type INVERTER



Models	Indoor unit	Outdoor unit
	AWY14LSAZ	AOY14LSAWC
	AWH14LSAZ	AOH14LSAWC
	AWY17LSAZ	AOY17LSAWC
	AWH17LSAZ	AOH17LSAWC

C O N T E N T S

SPECIFICATIONS	1
OUTLINE AND DIMENSIONS	2
REFRIGERANT SYSTEM DIAGRAM	3
CIRCUIT DIAGRAM	4
INDOOR PRINTED CIRCUIT BOARD CIRCUIT DIAGRAM	5
OUTDOOR PRINTED CIRCUIT BOARD CIRCUIT DIAGRAM	6
ERROR CONTENTS	9
DISASSEMBLY ILLUSTRATION	15
PARTS LIST	18



Большая библиотека технической документации

<https://splitsystema48.ru/instrukcii-po-ekspluatácii-kondicionerov.html>

каталоги, инструкции, сервисные мануалы, схемы.

S P E C I F I C A T I O N S

TYPE	Cooling and Heat-pump heating			
INDOOR UNIT	AWH14LSAZ	AWY14LSAZ	AWH17LSAZ	AWY17LSAZ
OUTDOOR UNIT	AOH14LSAWC	AOY14LSAWC	AOH17LSAWC	AOY17LSAWC
COOLING CAPACITY (kW)	4.0		4.8	

ELECTRICAL DATA

POWER SOURCE (V)	230		
FREQUENCY (Hz)	50		
RUNNING CURRENT (A)	4.7	6.6	
INPUT WATTS (kW)	1.06		
E.E.R. (kW/kW)	3.77	1.49	
MOISTURE REMOVAL (ℓ/hr)	2.1	2.8	
AIR CIRCULATION-Hi (m³/hr)	840		

COMPRESSOR

TYPE	Hermetic type, Inverter, Three phase, Induction motor, Rotary		
CODE	808 - 902 - 80		
REFRIGERANT R410A (g)	1,350		

FAN MOTOR

POWER SOURCE (V)	230		
INDOOR UNIT	HI-SPEED (r.p.m.)	1,500	
	MED-SPEED (r.p.m.)	1,370	
	LO-SPEED (r.p.m.)	1,110	
OUTDOOR UNIT (r.p.m.)	820	850	

DIMENSIONS

INDOOR UNIT	H x W x D (mm)	250 x 890 x 228	
OUTDOOR UNIT		578 x 790 x 300	

WEIGHT

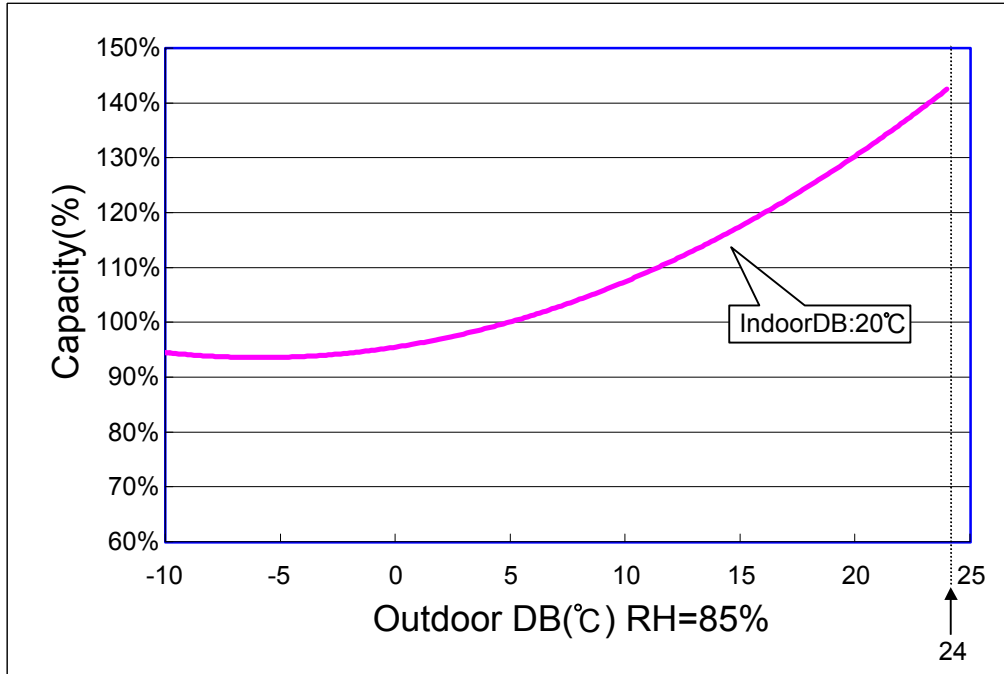
INDOOR UNIT	GROSS / NET (kg)	18 / 13.5	
OUTDOOR UNIT		40 / 38	

REFRIGERANT CHARGE (R410A)

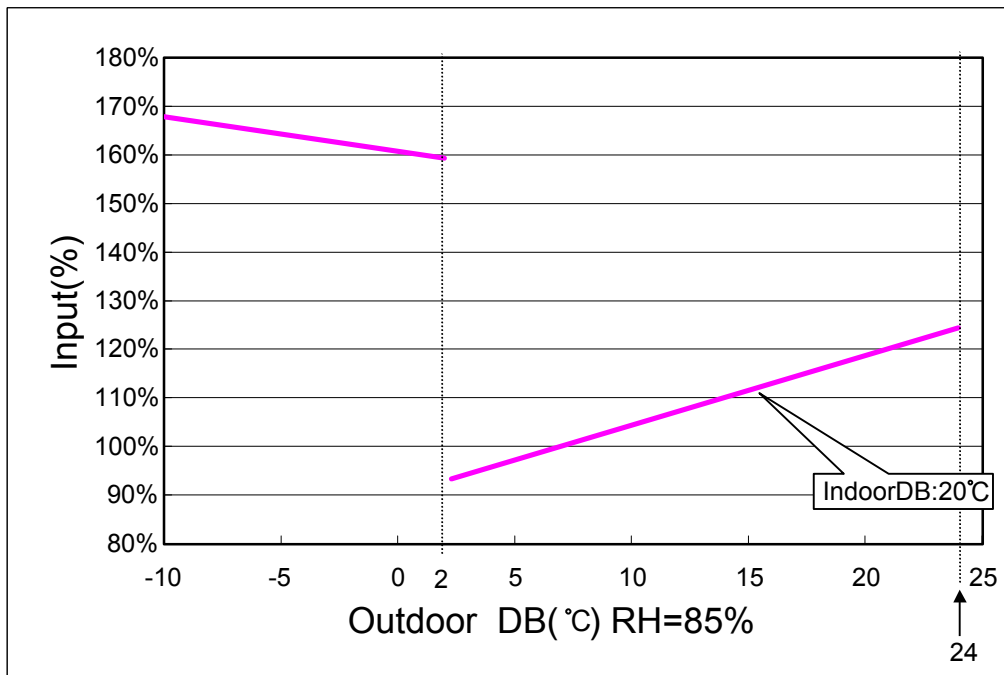
PIPE LENGTH	7.5 m (ft)	10 m (ft)	15 m (ft)	Additional refrigerant
FULL CHARGE AMOUNT	None	None	None	CHARGE LESS

• Heating

(Capacity curve)



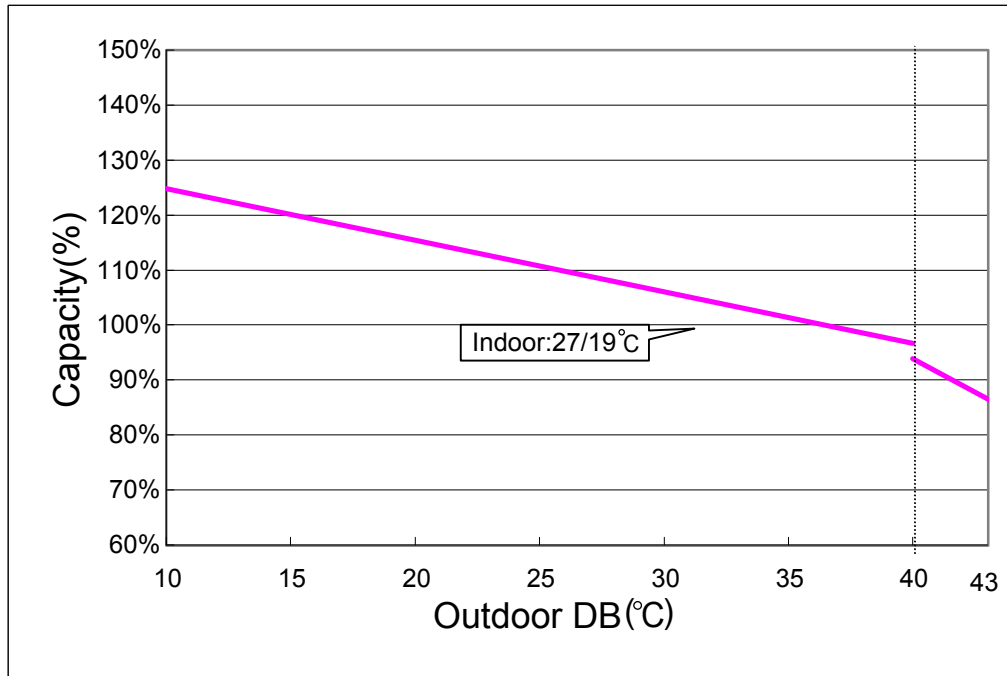
(Input curve)



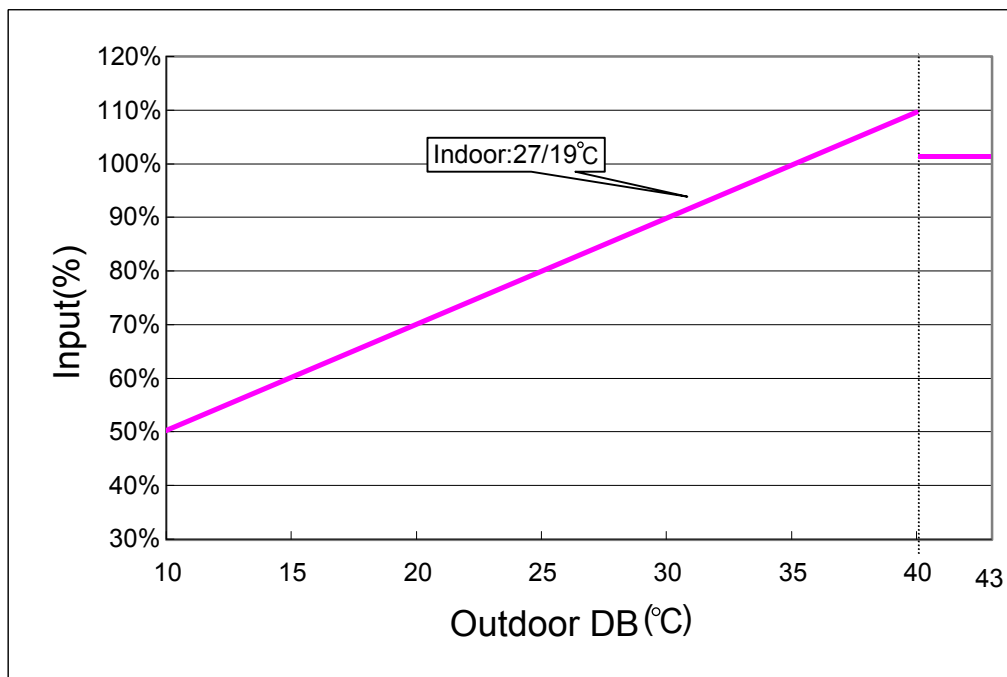
(Remarks) Above measurement was conducted under the low temperature heating capacity measuring condition, since the defrosting operation starts up at lower than 2 de (it was measured at the compressor maximum frequency, including the defrosting cycle.)

• **Cooling**

(Capacity curve)



(Input curve)

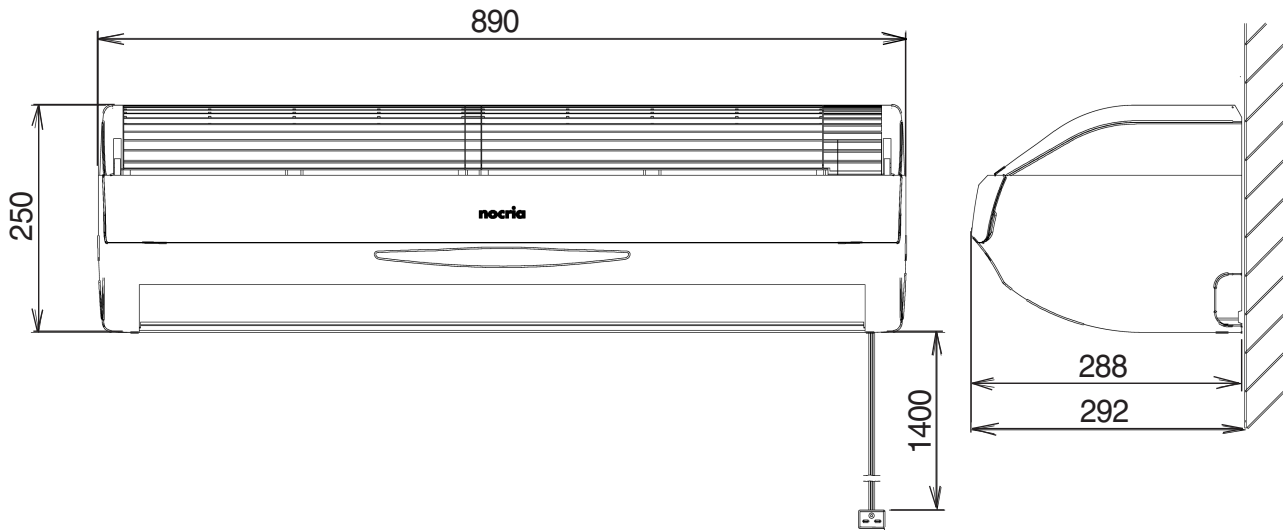


(Remarks) When the outdoor temperature is higher than 40 degC, the current release function starts to operate and the copressor rotation is decreased, and the capacity goes down.

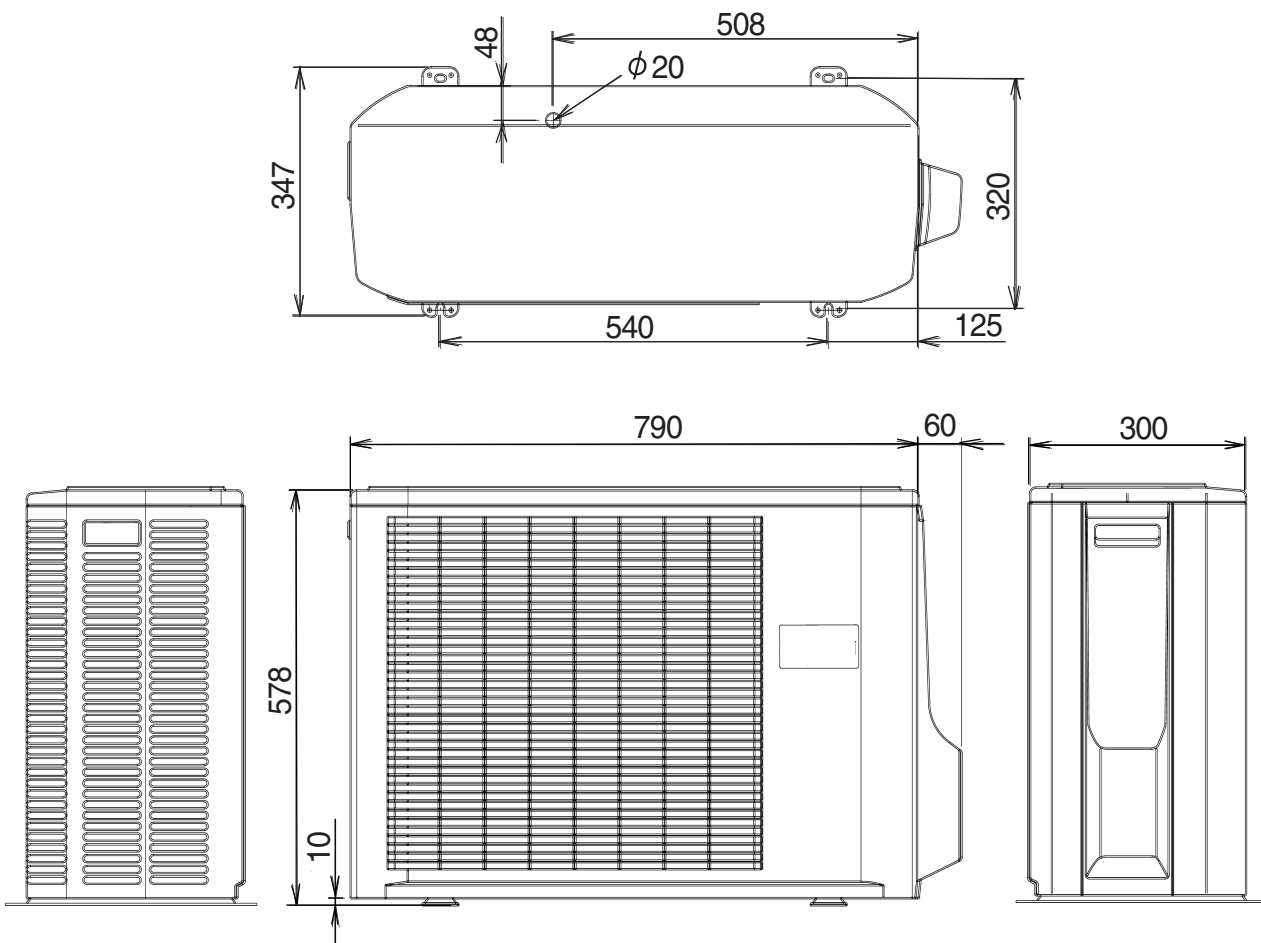
DIMENSIONS

Models : AWY14LSAZ, AWH14LSAZ
AWY17LSAZ, AWH17LSAZ

Unit : mm

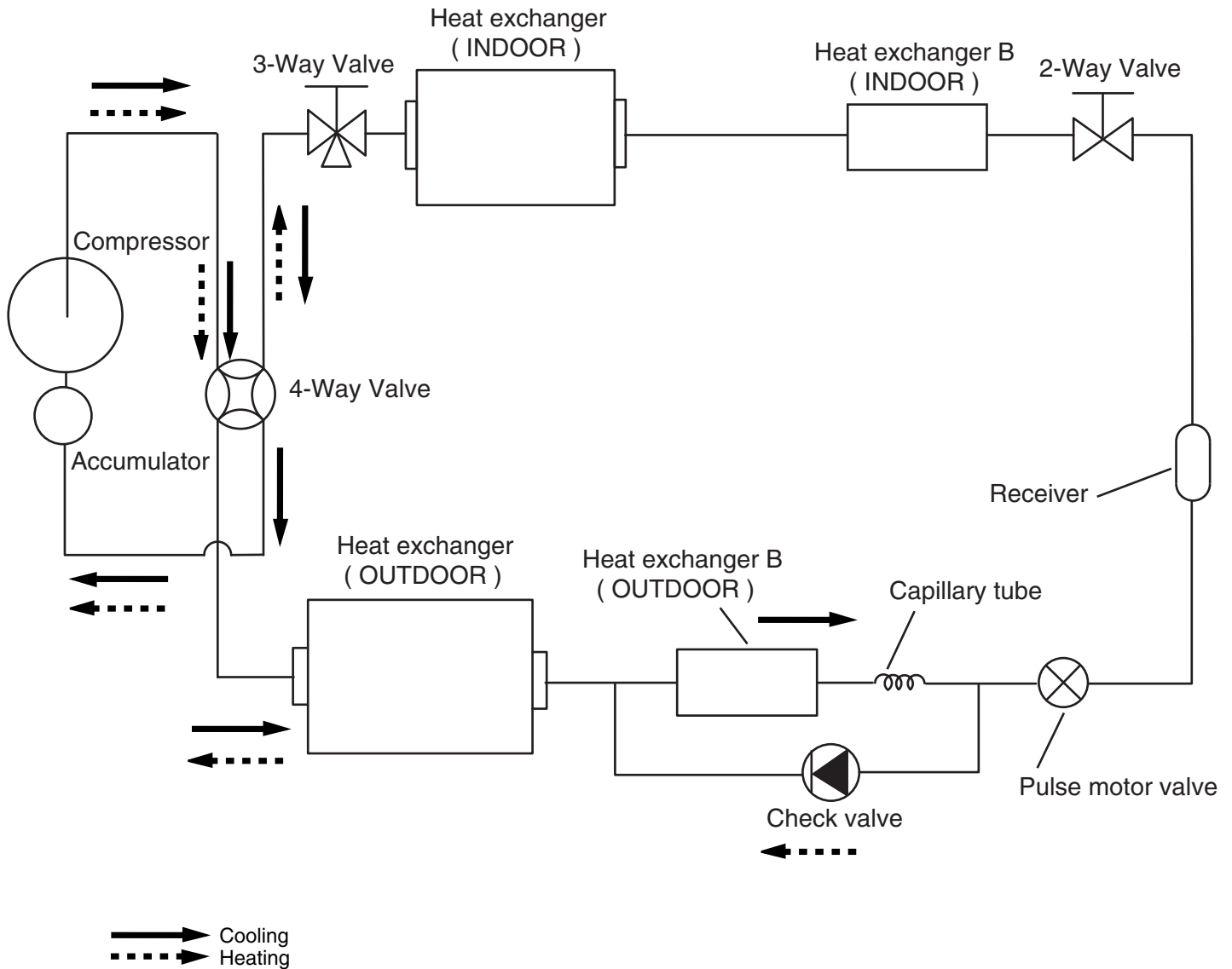


Models : AOY14LSAWC, AOH14LSAWC
AOY17LSAWC, AOH17LSAWC



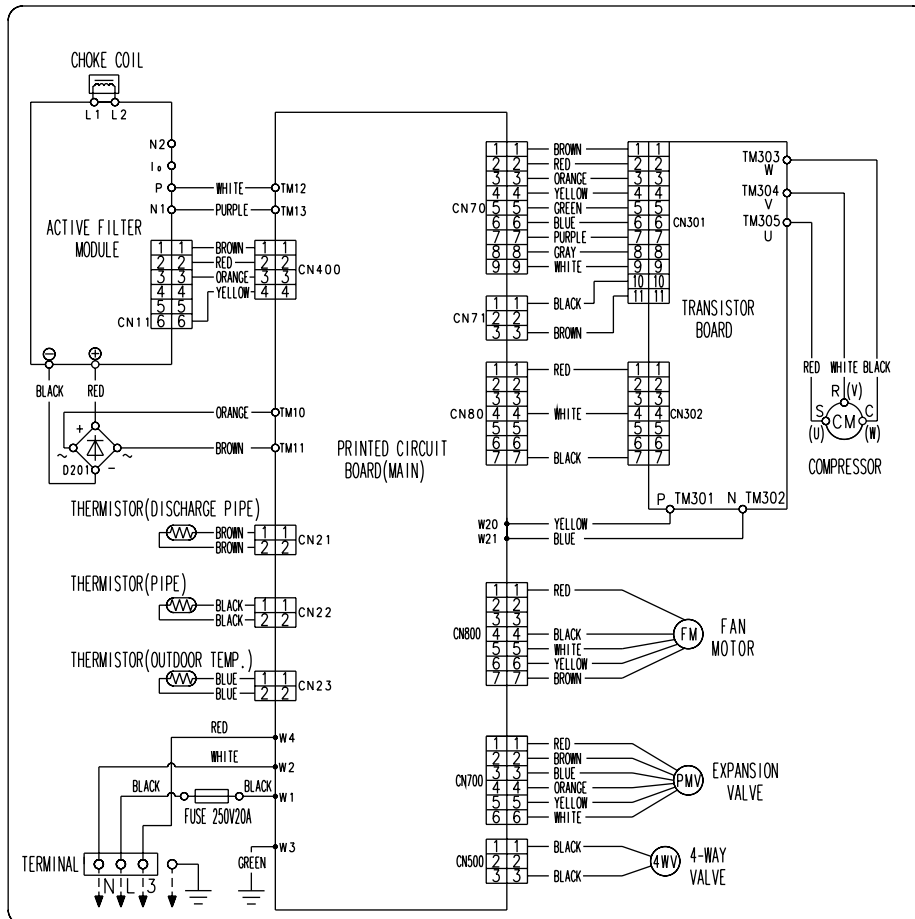
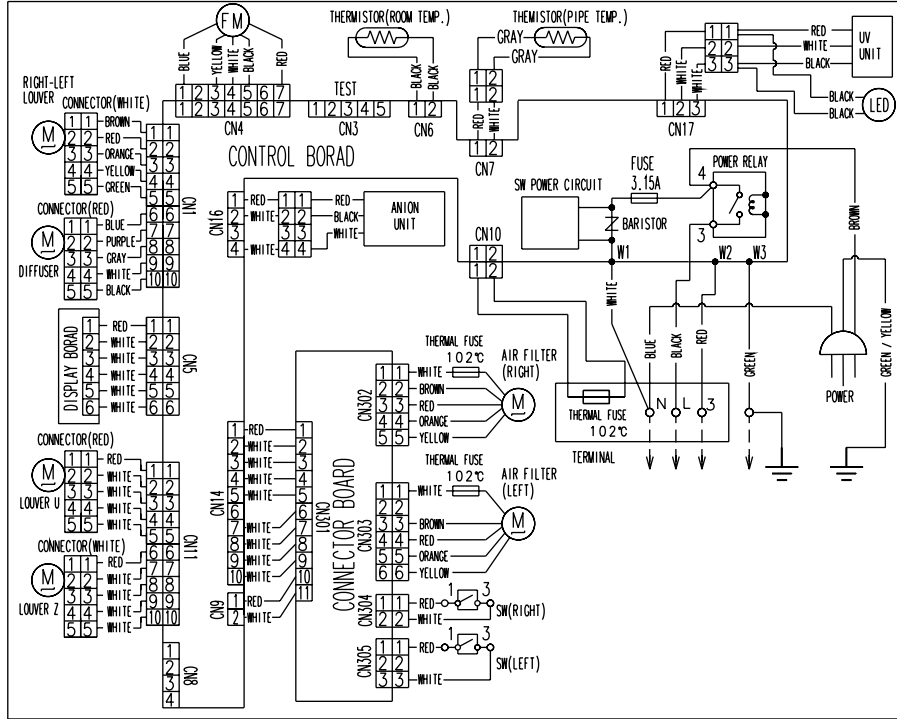
REFRIGERANT SYSTEM DIAGRAM

Models : AWY14LSAZ / AOY14LSAWC
AWH14LSAZ / AOH14LSAWC
AWY17LSAZ / AOY17LSAWC
AWH17LSAZ / AOH17LSAWC



CIRCUIT DIAGRAM

Models : AWY14LSAZ / AOY14LSAWC
 AWH14LSAZ / AOH14LSAWC
 AWY17LSAZ / AOY17LSAWC
 AWH17LSAZ / AOH17LSAWC

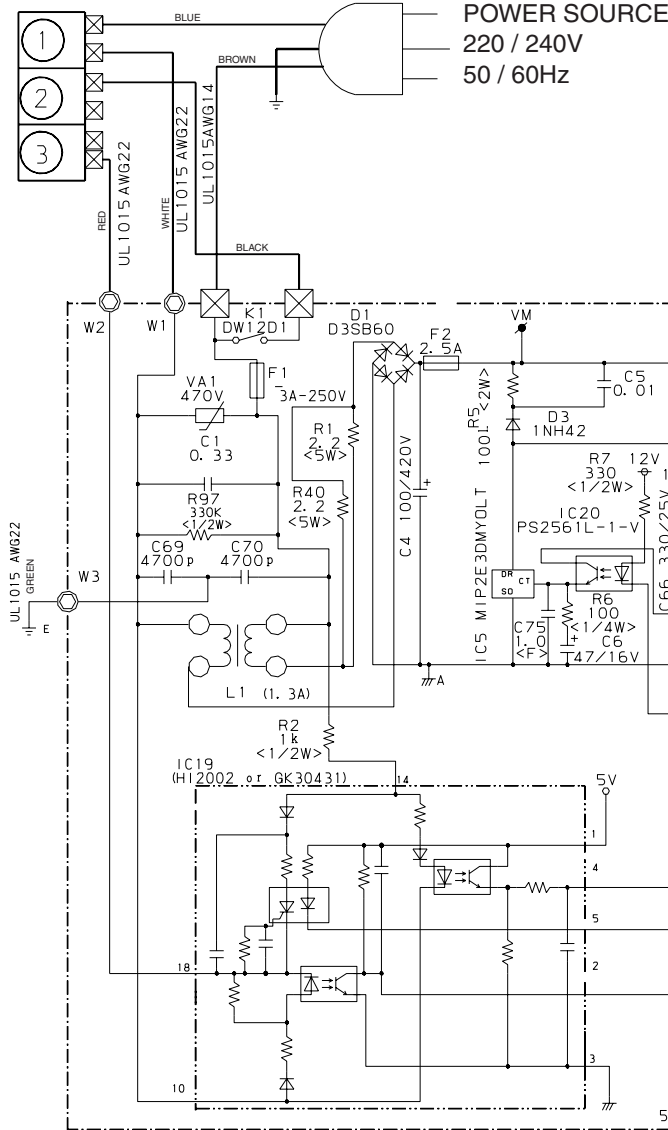


INDOOR PRINTED CIRCUIT BOARD CIRCUIT DIAGRAM

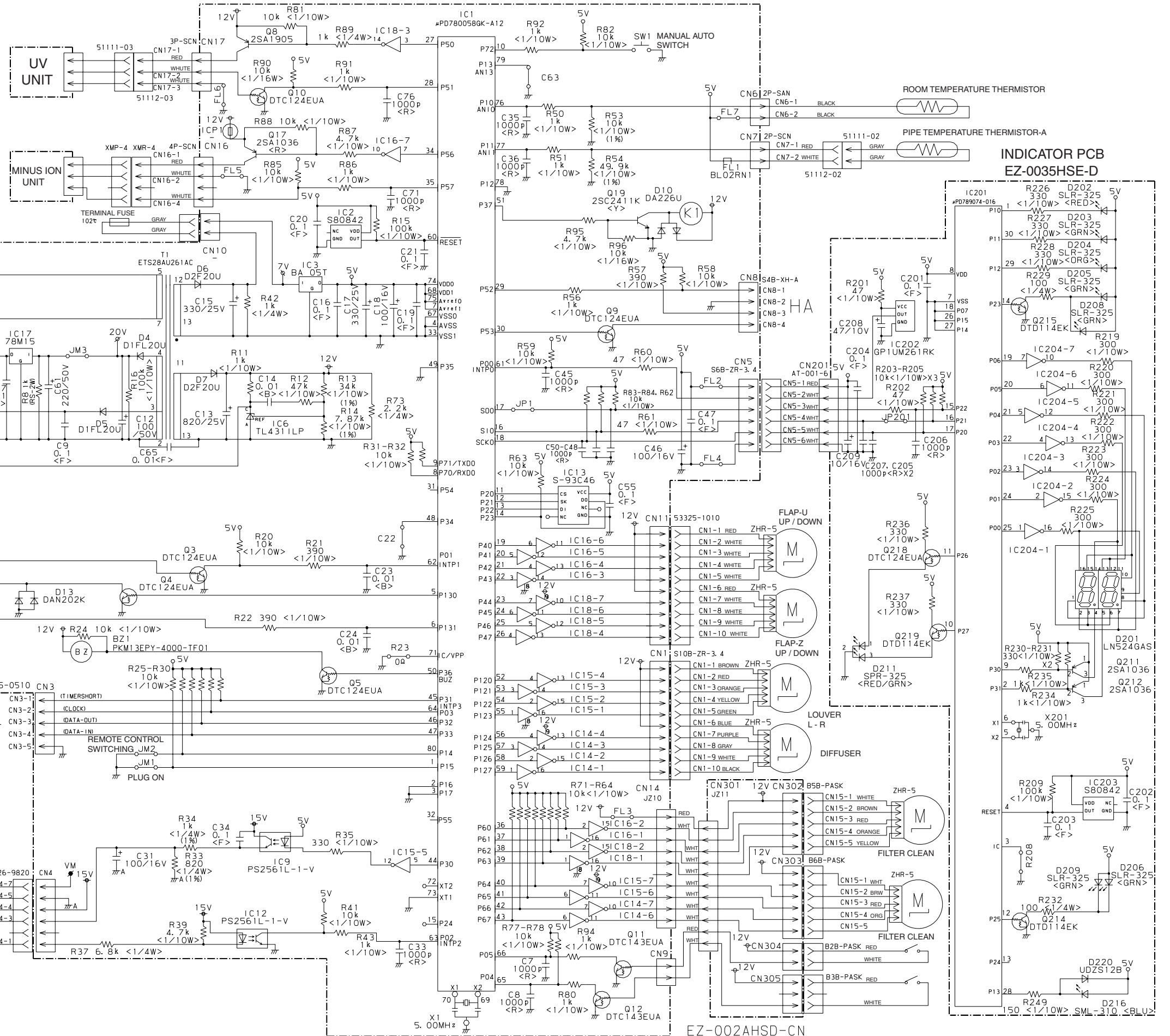
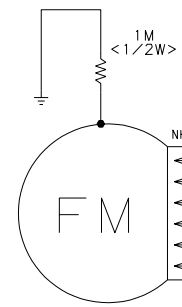
Models : AWY14LSACW, AWH14LSACW
AWY17LSACW, AWH17LSACW

CONTROLLER PCB ASSEMBLY (MAIN PCB) EZ-35HSE-C

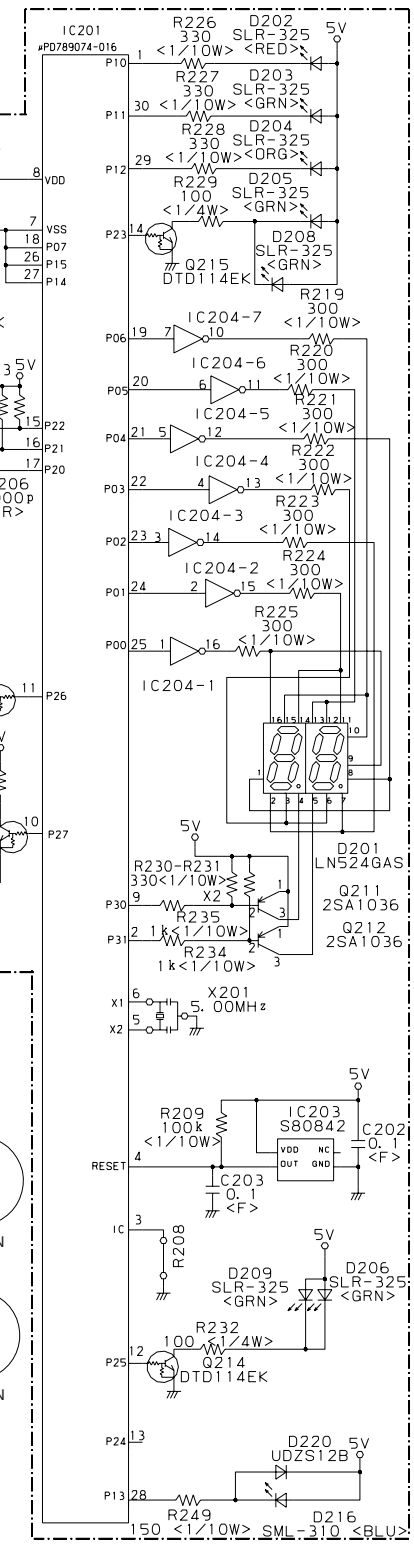
TERMINAL BOARD



FAN MOTOR



INDICATOR PCB EZ-0035HSE-D

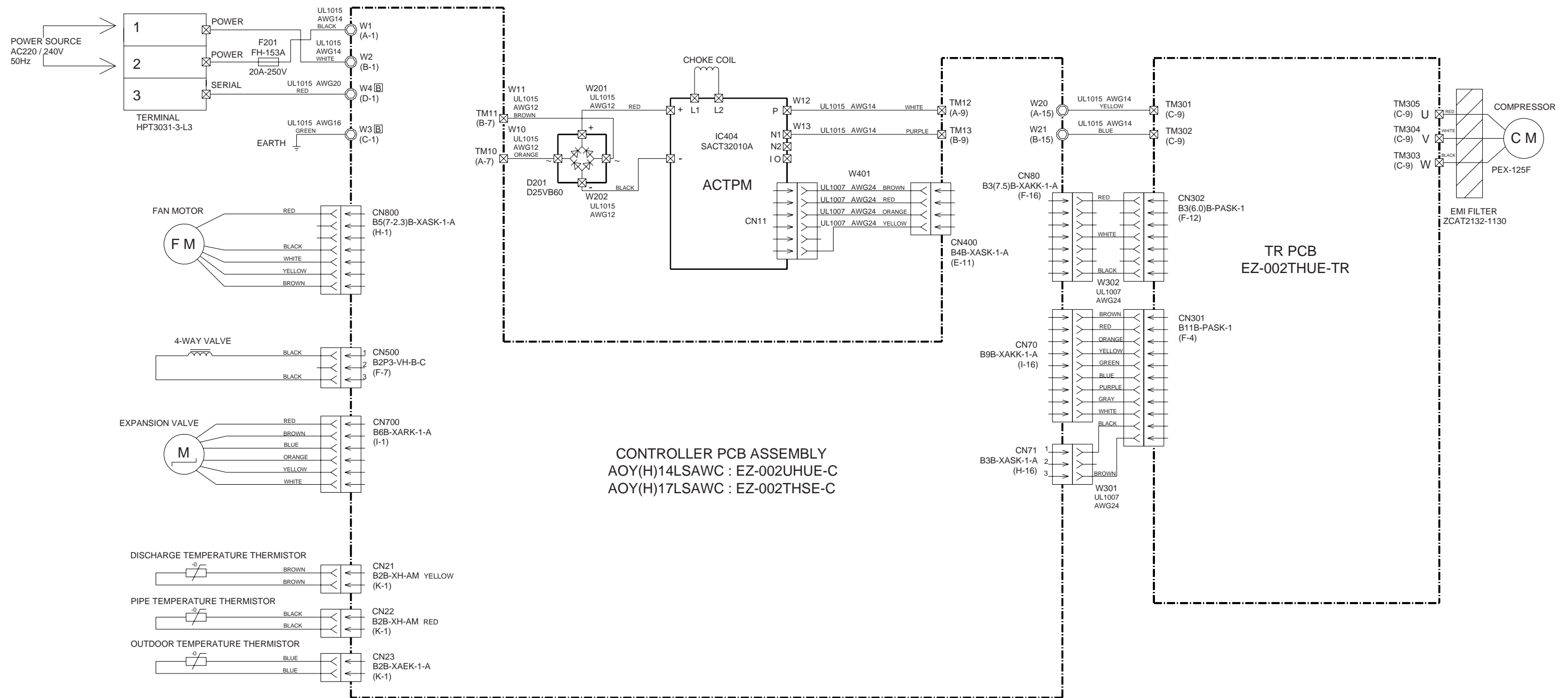


EZ-002AHSD-CN

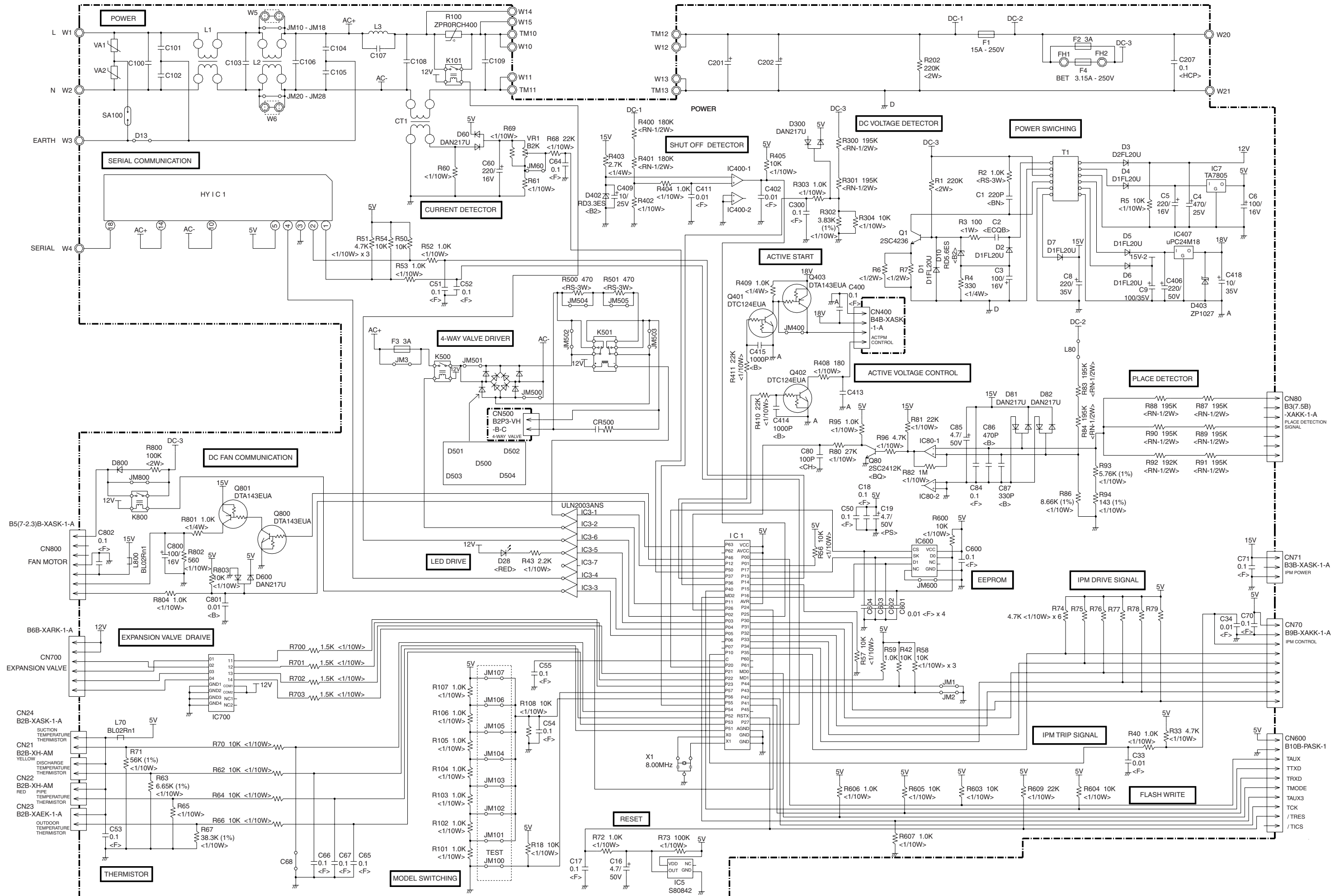
OUTDOOR PRINTED CIRCUIT BOARD CIRCUIT DIAGRAM

**Models : AOY14LSAWC, AOH14LSAWC
AOY17LSAWC, AOH17LSAWC**

INVERTER UNIT

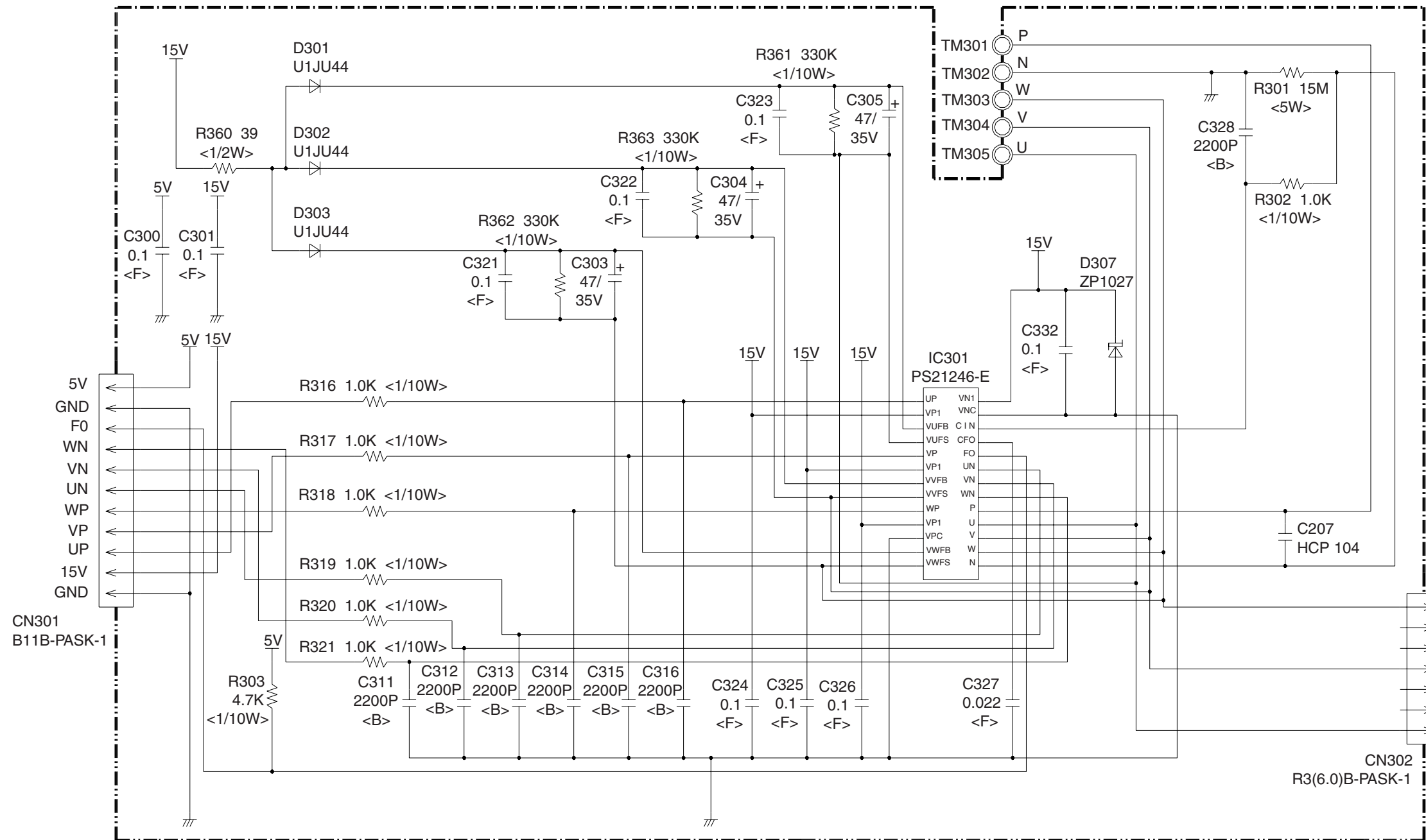


CONTROLLER PCB ASSEMBLY
AOY(H)14LSAWC : EZ-002UHUE-C
AOY(H)17LSAWC : EZ-002THSE-C



Models : AOY14LSAWC, AOH14LSAWC
AOY17LSAWC, AOH17LSAWC

TR PCB ASSEMBLY
EZ-002THUE-TR



E R R O R C O N T E N T S

Self-diagnosis function

This function memorizes the trouble diagnosis function (Flashing LED display) when trouble occurs at an indoor unit PC board. (The memory contents are not erased even when the power cord is disconnected from the power outlet.)

The self-diagnosis function (LED display) allows detailed diagnosis by allowing switching to large division indication and small division indication.

Self-diagnosis function [LED display] (How to call memory)

- (1) □ When trouble occurs, it is displayed by [Operation lamp (red)], [Timer lamp (green)], and temperature monitor (7 segments display) 2 digits.
- (2) □ After the power plug is pulled, operation starts by remote control. **[Normal operation display]**
- (3) □ When the [Test run] button on the back of the remote controller is pressed, [Memory contents] display is performed.
 - * □ When there is no error memory memorization, the unit enters the [Test run] state.

Memory erase method

- (1) □ The memory contents can be erased by pressing the [Service end button-emergency operation] button on the body for 3 seconds or longer during self-diagnosis function display. (The indoor unit buzzer buzzes for 3 seconds.)
 - * □ For 1 minute after trouble reset, the temperature and humidity monitor displays [--]. After 1 minute, the temperature and humidity monitor is displayed.

Self-diagnosis function table (LED display)

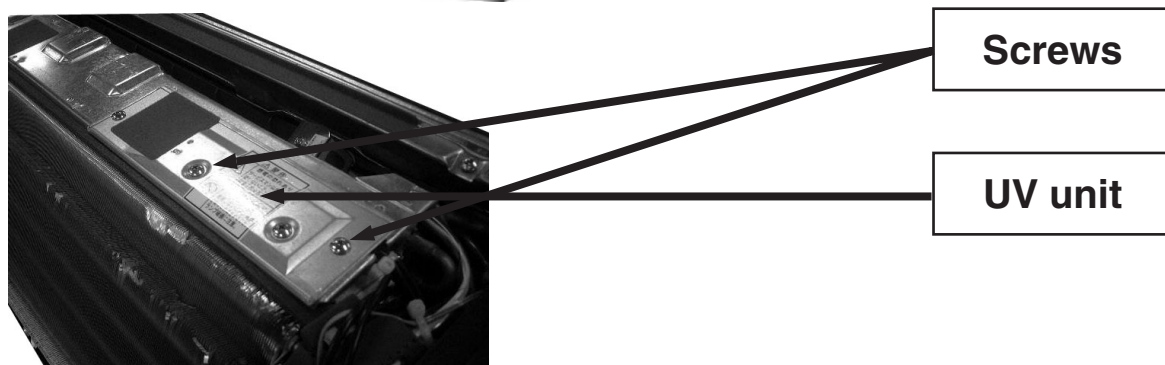
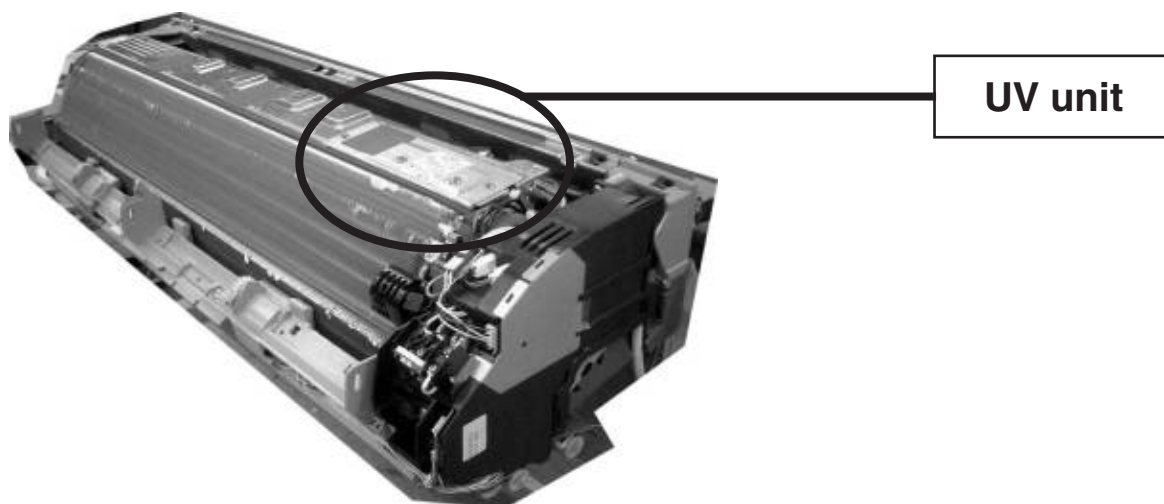
[Small division indication] [Table 2] □

Large division indication	Small division indication		Temperature monitor display	Error judgement	Body operation
	Temperature monitor display	Display			
Serial signal error	02 to 07	Operation : □ ON Timer : □ 1 sec ON/OFF	02	When the serial signal is not read even once within 7 seconds from power relay ON after operation starts.	Operation cause: Indoor and outdoor unit connection wire Outdoor unit Reset when serial (reverse) becomes normal.
		Operation : □ 0.1 sec Timer : □ 0.5 sec 2 times	03	Serial (reverse) error 7 seconds after power relay ON.	Operation cause: Indoor and outdoor unit connection wire Reset when serial (reverse) becomes normal.
		Operation : □ 0.1 sec Timer : □ 0.5 sec 3 times	04	When serial signal (forward) is not read within 10 seconds after power relay ON.	Operation cause: Indoor unit Reset when serial (forward) becomes normal.
		Operation : □ 0.1 sec Timer : □ 0.5 sec 4 times	05	Serial (reverse) error 10 seconds after power relay ON.	Operation cause: Indoor unit Reset when serial (forward) becomes normal.
		Operation : □ 0.1 sec Timer : □ 0.5 sec 5 times	06	When signal from control board is not received normally at display board	Operation cause: Indoor unit Reset when signal becomes normal.
		Operation : □ 0.1 sec Timer : □ 0.5 sec 6 times	07	When signal from display board is not received normally at control board	Operation cause: Indoor unit Reset when signal becomes normal.
		Indoor unit thermistor abnormal	22 to 25	Operation : □ 0.1 sec Timer : □ 0.5 sec 2 times	22
Operation : □ 0.1 sec Timer : □ 0.5 sec 3 times	23			When thermistor detected valve open or shorted (Detected only when power on)	Operation cause: Indoor unit Reset when detected value becomes normal.
Operation : □ 0.1 sec Timer : □ 0.5 sec 4 times	24			When thermistor detected valve open or shorted (Detected only when power on)	Operation cause: Indoor unit Reset when detected value becomes normal.
Operation : □ 0.1 sec Timer : □ 0.5 sec 5 times	25			When thermistor detected valve open or shorted (Detected only when power on)	Operation cause: Indoor unit Reset when detected value becomes normal.
Operation : □ 0.1 sec Timer : □ 0.5 sec 2 times	32			When thermistor detected valve open or shorted (constantly detected)	Operation cause: Outdoor unit Reset when detected value becomes normal.
Operation : □ 0.1 sec Timer : □ 0.5 sec 3 times	33			When thermistor detected valve open (constantly detected)	Operation cause: Outdoor unit Reset when detected value becomes normal.
Operation : □ 0.1 sec Timer : □ 0.5 sec 4 times	34			When thermistor detected valve open or shorted (constantly detected)	Operation cause: Outdoor unit Reset when detected value becomes normal.
Outdoor unit thermistor abnormal	32 to 37	Operation : □ 0.5 sec 3 times Timer : □ 0.1 sec	32	When thermistor detected valve open or shorted (constantly detected)	Operation cause: Outdoor unit Reset when detected value becomes normal.
		Operation : □ 0.1 sec Timer : □ 0.1 sec	37	When thermistor detected valve open or shorted (constantly detected)	Operation cause: Outdoor unit Reset when detected value becomes normal.

Large division indication	Temperature monitor display	Small division indication		Temperature monitor display	Error judgement	Body operation
			Display			
Outdoor unit thermistor abnormal	32 to 37	Suction thermistor faulty	Operation : 0.1 sec Timer : □ 0.5 sec 5 times	35	When thermistor detected valve open (constantly detected)	Operation cause: Outdoor unit Reset when detected value becomes normal.
		Thermistor on H-IC faulty	Operation : 0.1 sec Timer : □ 0.5 sec 6 times	36	When thermistor detected valve open or shorted (constantly detected)	Operation cause: Outdoor unit Reset when detected value becomes normal.
		Heat sink thermistor faulty	Operation : 0.1 sec Timer : □ 0.5 sec 7 times	37	When thermistor detected valve open or shorted (constantly detected)	Operation cause: Outdoor unit Reset when detected value becomes normal.
Indoor unit control unit faulty	42 to 48	Filter reset - forced automatic switch faulty	Operation : 0.1 sec Timer : □ 0.5 sec 2 times	42	When filter reset? forced automatic SW is ON for 30 secs or more	Operation cause: Indoor unit Other than display operate normally. Display performed only during normal operation. Goes off if operation stops.
		Main relay welded	Operation : 0.1 sec Timer : □ 0.5 sec 3 times	43	When serial signal (reverse) input even though main relay OFF condition after 2 mins after operation stopped.	Operation cause: Indoor unit Permanent stop
		Power interrupt faulty	Operation : 0.1 sec Timer : □ 0.5 sec 4 times	44	When power frequency (50/60Hz) cannot be judged even after 2 secs have elapsed after power was turned on.	Operation cause: Indoor unit Permanent stop
		Occupant detection sensor faulty	Operation : 0.1 sec Timer : □ 0.5 sec 5 times	45	When output from occupant detection sensor is not read for 10 mins.	Operation cause: Indoor unit Permanent stop
		Air cleaning power supply voltage abnormal	Operation : 0.1 sec Timer : □ 0.5 sec 7 times	47	When main power protection operation was performed 3 mins retry control 4 times in discharge unit shorted state. (Same operation as when suction grille is open.)	Operation cause: Indoor unit Air cleaning unit operation stop
Outdoor unit control unit faulty	52 to 57	Air cleaning monitor signal abnormal	Operation : 0.1 sec Timer : □ 0.5 sec 8 times	48	When air cleaning unit is energized even through air cleaning is not operated.	Operation cause: Indoor unit Permanent stop
		Transistor module overcurrent	Operation : 0.1 sec Timer : □ 0.5 sec 2 times	52	When outdoor unit overcurrent 2nd operation occurs within 40 secs from starting and 3rd operation occurs within 15 minutes	Operation cause: Outdoor unit Permanent stop
		Outdoor unit input current abnormal	Operation : 0.1 sec Timer : □ 0.5 sec 3 times	53	When current during operation 1 min or more after compressor starts is 0A	Operation cause: Outdoor unit Permanent stop
Compressor speed abnormal	54	Compressor speed abnormal	Operation : 0.1 sec Timer : □ 0.5 sec 4 times	54	When speed abnormal 2nd operation occurs within 40 secs from starting	Operation cause: Outdoor unit Permanent stop

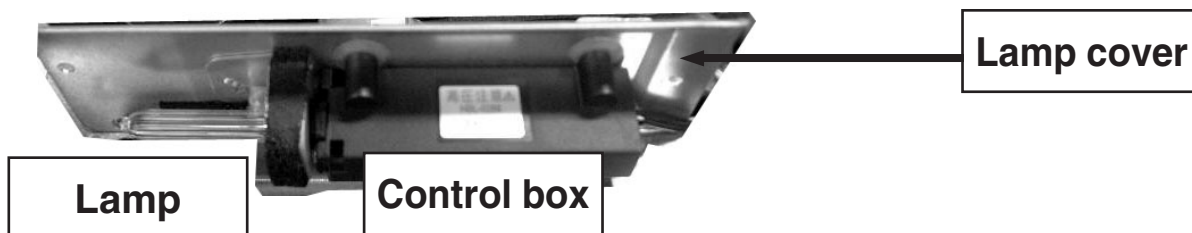
Large division indication		Small division indication		Temperature monitor display	Error judgement	Body operation
	Display		Display			
Outdoor unit thermistor abnormal	Operation : 0.5 sec 5 times Timer : □ 0.1 sec	Compressor position abnormal	Operation : 0.1 sec Timer : □ 0.5 sec 5 times	55	When position detection abnormal 2nd operation occurs within 40 secs from starting	Operation cause: Outdoor unit Permanent stop
		Outdoor unit fan abnormal	Operation : 0.1 sec Timer : □ 0.5 sec 6 times	56	When fan motor current, position detection, or abnormal operated 2 times within 10 mins	Operation cause: Outdoor unit Permanent stop
		Outdoor unit fan communication abnormal	Operation : 0.1 sec Timer : □ 0.5 sec 7 times	57	When fan motor drive data on board was continuously abnormal for 10 mins	Operation cause: Outdoor unit Permanent stop
Indoor unit fan motor abnormal	Operation : 0.5 sec 6 times Timer : □ 0.1 sec	Fan motor locked	Operation : 0.1 sec Timer : □ 0.5 sec 2 times	62	When detected value after 56 secs after fan motor starts is 0 r.p.m.	Operation cause: Outdoor unit Permanent stop
		Fan speed abnormal	Operation : 0.1 sec Timer : □ 0.5 sec 3 times	63	When detected speed after 56 secs after fan motor starts is 1/3 or less of target speed	Operation cause: Outdoor unit Permanent stop
Refrigerating cycle abnormal	Operation : 0.5 sec 7 times Timer : □ 0.1 sec	Discharge temperature abnormal	Operation : 0.1 sec Timer : □ 0.5 sec 2 times	72	When compressor stopped 2 times by discharge protection	Operation cause: Outdoor unit Permanent stop
		Cooling excessive high pressure rise protection faulty	Operation : 0.1 sec Timer : □ 0.5 sec 3 times	73	Cooling excessive high pressure rise protection operated and displayed in 3 mins delay	Operation cause: Outdoor unit Compressor stopped During 3 mins delay
		DC 4-way valve, solenoid valve faulty	Operation : 0.1 sec Timer : □ 0.5 sec 4 times	74	When 4-way valve switching performed and operated 5 times consecutively when room temperature and indoor unit piping thermistor temperature difference of 10°C or more detected	Operation cause: Outdoor unit Permanent stop
		Expansion valve full closed protection faulty	Operation : 0.1 sec Timer : □ 0.5 sec 5 times	75	When expansion valve full closed protection operated 2 times	Operation cause: Outdoor unit Permanent stop
Active filter abnormal	Operation : 0.5 sec 8 times Timer : □ 0.1 sec	Active filter voltage detection abnormal (when operated 2 times)	Operation : 0.1 sec Timer : □ 0.5 sec 2 times	82	When active filter output voltage abnormal (300V or more, or 80V or less) operated 2 consecutive times within 40 secs	Operation cause: Outdoor unit Permanent stop
		Active filter voltage detection abnormal (1 time instant operation)	Operation : 0.1 sec Timer : □ 0.5 sec 3 times	83	Active filter abnormal / active filter instant interruption abnormal	Operation cause: Outdoor unit Permanent stop
Power supply voltage abnormal	Operation : 0.1 sec Dash: □ 0.1 sec Indoor unit buzzer sound	—	—	AA	200V model: When 100V impressed 100V model: When 200V impressed	Operation cause: Outdoor unit Permanent stop
Outdoor unit control unit board faulty	Operation: □ 0.1 sec Timer: □ 0.1 sec Dash: □ 0.1 sec UV negative ion: 0.1 sec	—	—	Ab	When model information ROM on control board cannot be read	Operation cause: Outdoor unit Permanent stop

How to take UV unit to pieces



Take off screws, and take out UV unit.

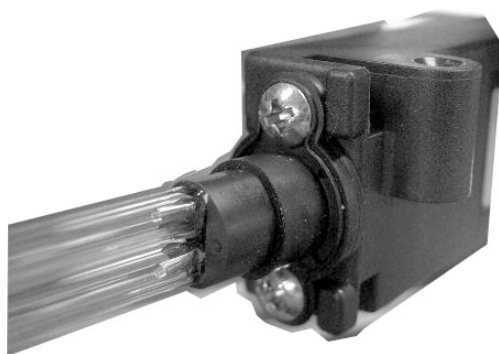
UV unit



Take off screws, and take out Control box (with lamp) from lamp cover.



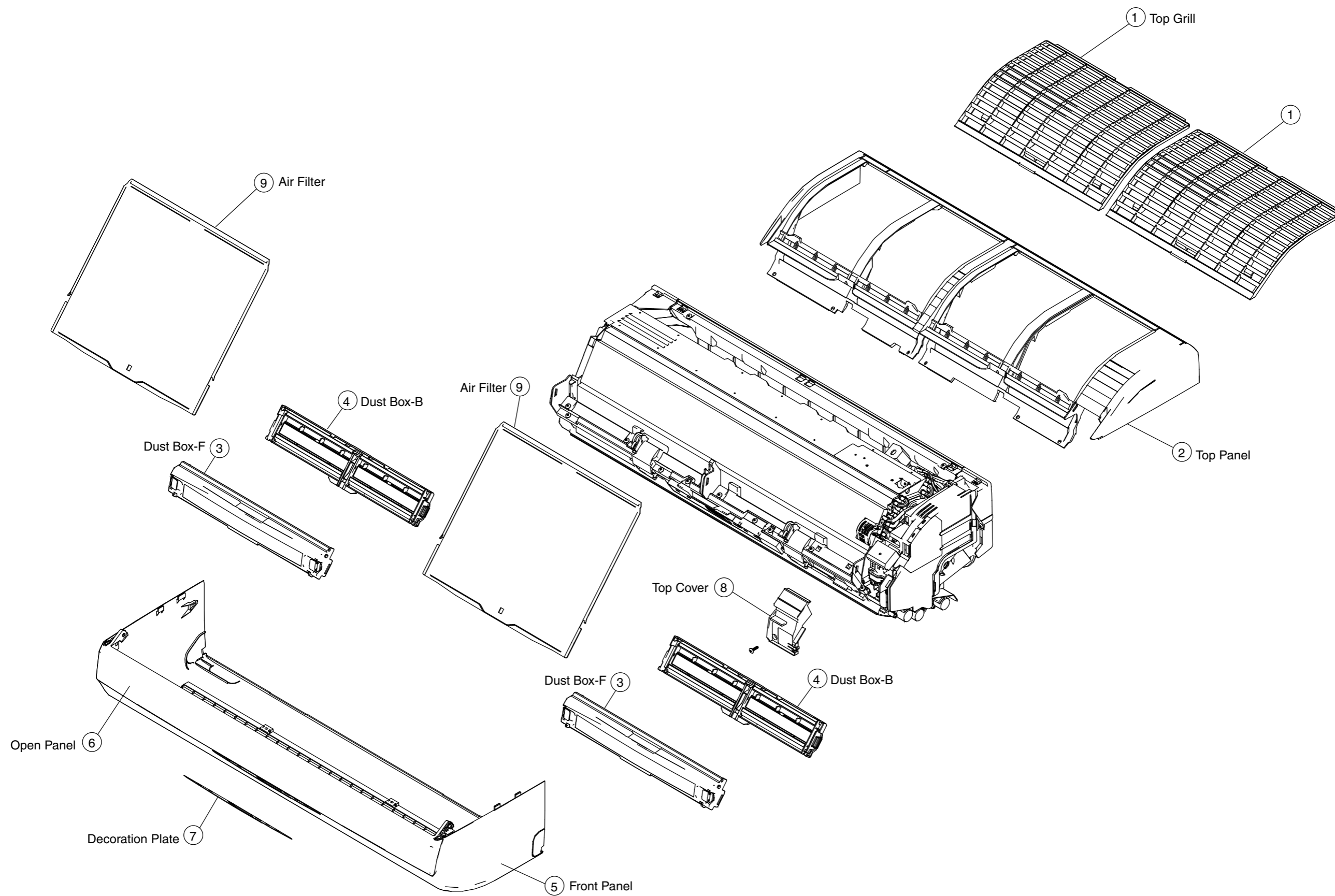
UV lamp and control box

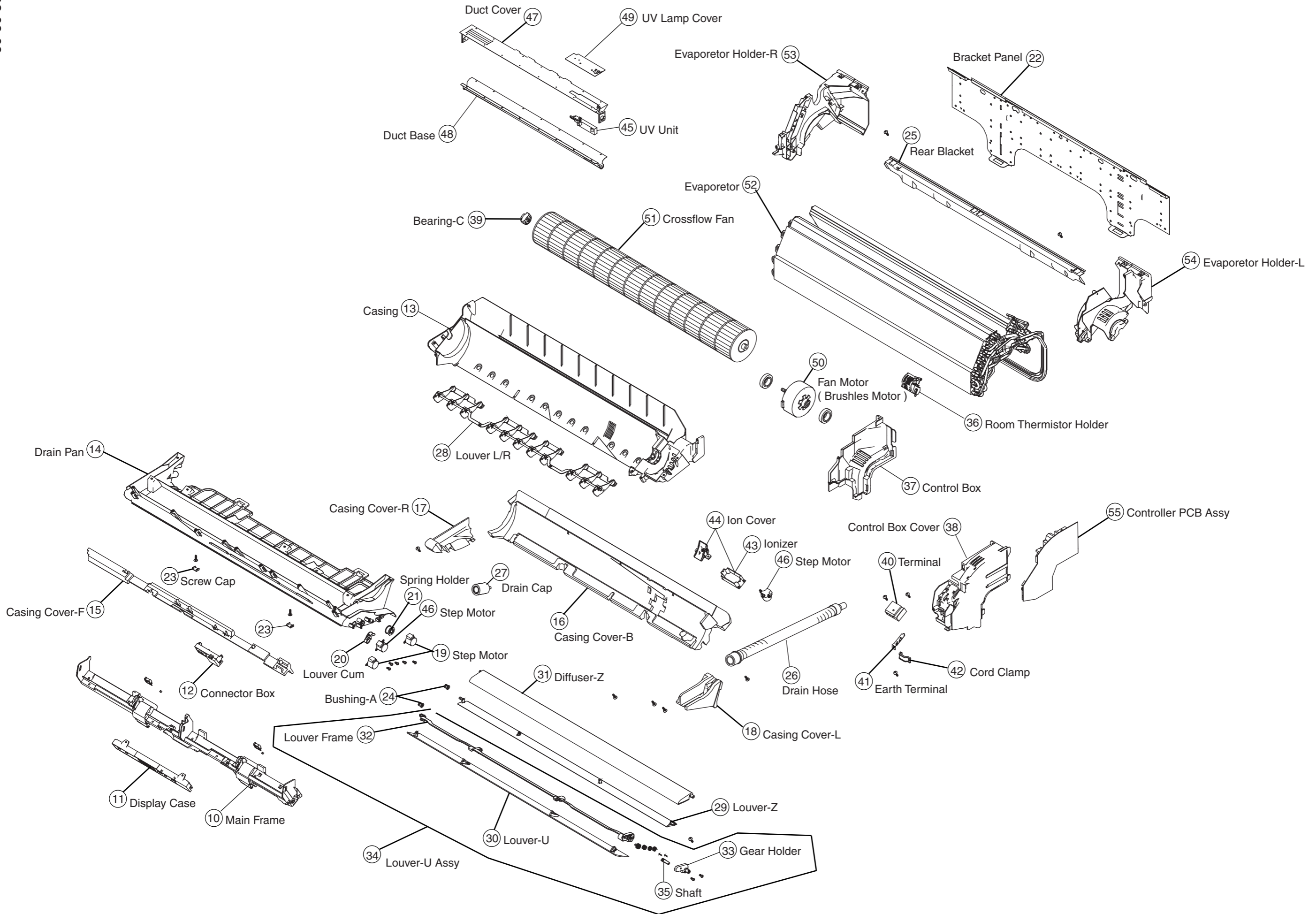


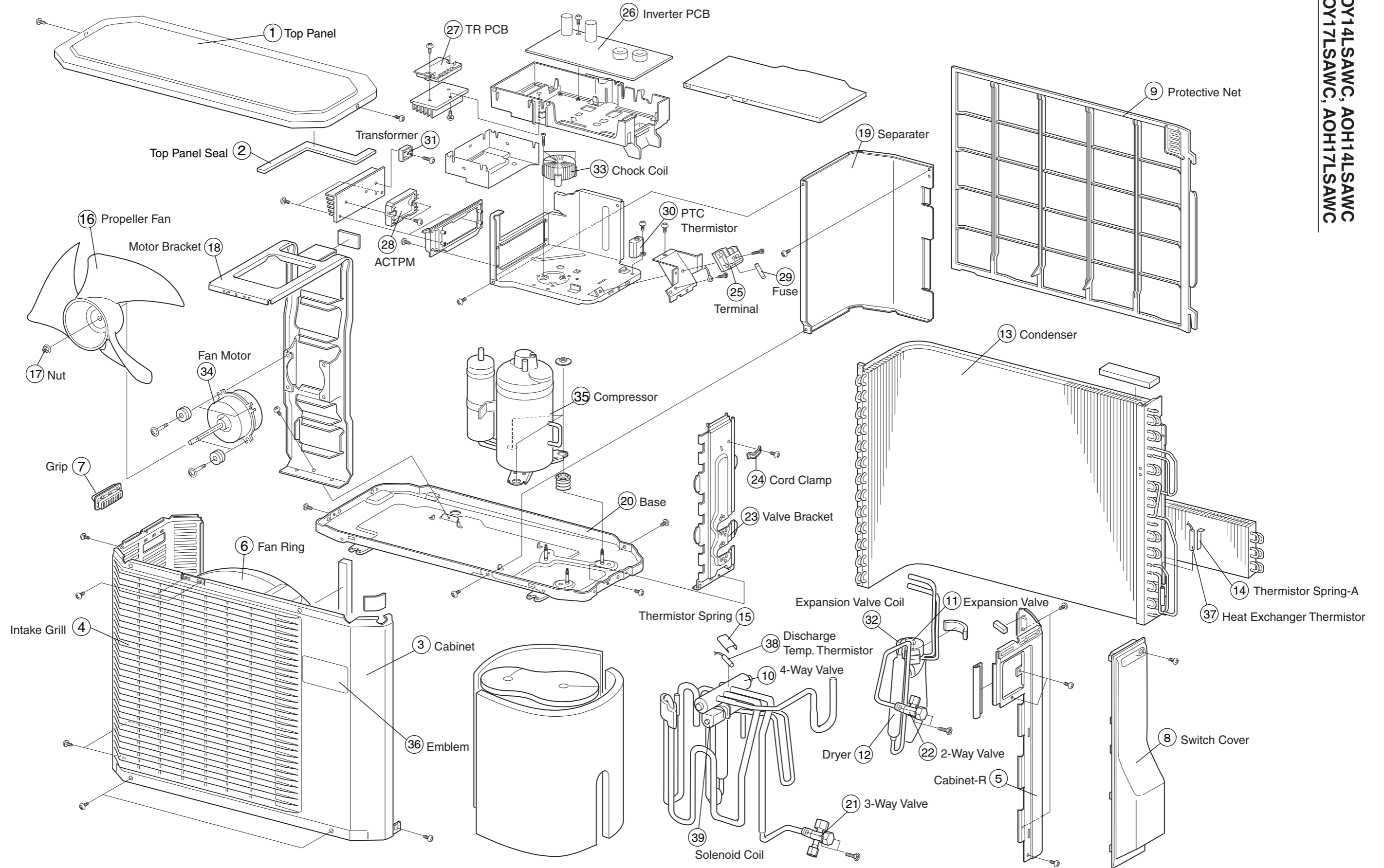
Take off screws, and pull lamp out of control box.



Models : AWY14LSAZ, AWH14LSAZ
AWY17LSAZ, AWH17LSAZ







PARTS LIST

INDOOR UNIT

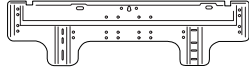



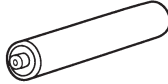


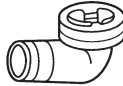
Ref. No.	Description	Part No.				Ord.
		AWY14LSAZ	AWH14LSAZ	AWY17LSAZ	AWH17LSAZ	Q'ty
1	Top Grill	9311962014	9311962014	9311962014	9311962014	
2	Top Panel	9311963011	9311963011	9311963011	9311963011	
3	Dust Box-F	->Ref.56	->Ref.56	->Ref.56	->Ref.56	
4	Dust Box-B	->Ref.56	->Ref.56	->Ref.56	->Ref.56	
5	Front Panel Assy	9312251025	9312251032	9312251025	9312251032	
6	Open Panel	9311959021	9311959038	9311959021	9311959038	
7	Decoration Plate	9311964025	9311964025	9311964025	9311964025	
8	Top Cover	9311982012	9311982012	9311982012	9311982012	
9	Air Filter	9311983019	9311983019	9311983019	9311983019	
10	Main Frame	9311973010	9311973010	9311973010	9311973010	
11	Display Case	9312009015	9312009015	9312009015	9312009015	
12	Connector Box	9312008018	9312008018	9312008018	9312008018	
13	Casing total Assy	9312240012	9312240012	9312240012	9312240012	
14	Drain Pan total Assy	9312241019	9312241019	9312241019	9312241019	
15	Casing Cover-F	9312023011	9312023011	9312023011	9312023011	
16	Casing Cover-B	9312022014	9312022014	9312022014	9312022014	
17	Casing Cover-R	9312403011	9312403014	9312403014	9312403014	
18	Casing Cover-L	9312021017	9312021017	9312021017	9312021017	
19	Step Motor (MP24ZAN)	9703477010	9703477010	9703477010	9703477010	
20	Louver Cam	9312000012	9312000012	9312000012	9312000012	
21	Spring Holder	9311999010	9311999010	9311999010	9311999010	
22	Bracket Panel	9312011018	9312011018	9312011018	9312011018	
23	Screw Cap	not available	not available	not available	not available	
24	Bushing-A	9303529010	9303529010	9303529010	9303529010	
25	Rear Bracket	9312416011	9312416011	9312416011	9312416011	
26	Drain Hose	9310357019	9310357019	9310357019	9310357019	
27	Drain Cap	9304150008	9304150008	9304150008	9304150008	
28	Louver L / R	9311997016	9311997016	9311997016	9311997016	
29	Louver-Z	9311996019	9311996019	9311996019	9311996019	
30	Louver-U	9311993018	9311993018	9311993018	9311993018	
31	Diffuser-Z	9312003013	9312003013	9312003013	9312003013	
32	Louver Frame	9311994015	9311994015	9311994015	9311994015	
33	Gear Holder	9311995012	9311995012	9311995012	9311995012	
34	Louver-U Assy	9312243013	9312243013	9312243013	9312243013	
35	Shaft	->Ref.34	->Ref.34	->Ref.34	->Ref.34	
36	Room Temp. Thermistor Holder	9311948018	9311948018	9311948018	9311948018	
37	Control Box	9312005017	9312005017	9312005017	9312005017	
38	Control Box Cover	9312006014	9312006014	9312006014	9312006014	
39	Bearing-C	9306628017	9306628017	9306628017	9306628017	
40	Terminal	9306489120	9306489120	9306489120	9306489120	
41	Earth Terminal	9312809011	9312809011	9312809011	9312809011	
42	Cord Clamp	9302271002	9302271002	9302271002	9302271002	
43	Ionizer Assy	9312244010	9312244010	9312244010	9312244010	
44	Ion Cover	9312185016	9312185016	9312185016	9312185016	
45	UV Unit	9900144012	9900144012	9900144012	9900144012	
46	Step Motor (MP24GA)	9305780006	9305780006	9305780006	9305780006	
47	Duct Cover	->Ref.57	->Ref.57	->Ref.57	->Ref.57	
48	Duct Base	->Ref.57	->Ref.57	->Ref.57	->Ref.57	
49	UV Lamp Cover	not available	not available	not available	not available	
50	Fan Motor Assy (Brushless Motor)	9601423041	9601423041	9601423041	9601423041	
51	Crossflow Fan	9312004010	9312004010	9312004010	9312004010	
52	Evaporator Total Assy	9312776016	9312776016	9312776016	9312776016	
53	Evaporator Holder-R	9311985013	9311985013	9311985013	9311985013	
54	Evaporator Holder-L	9311986010	9311986010	9311986010	9311986010	
55	Controller PCB Assy	9705164017	9705164017	9705164024	9705164024	
56	Dust Box Assy	9312787012	9312787012	9312787012	9312787012	
57	Duct Assy	9312412013	9312412013	9312412013	9312412013	

OUTDOOR UNIT

Ref. No.	Description	Part No.				Ord.
		AOY14LSAWC	AOH14LSAWC	AOY17LSAWC	AOH17LSAWC	Q'ty
1	Top Panel	9308883025	9308883025	9308883025	9308883025	
2	Top Panel Seal	9309228016	9309228016	9309228016	9309228016	
3	Cabinet	9308878021	9308878021	9308878021	9308878021	
4	Blow Down Grill	9308884015	9308884015	9308884015	9308884015	
5	Cabinet-R	9308879028	9308879028	9308879028	9308879028	
6	Fan Ring	9308885012	9308885012	9308885012	9308885012	
7	Grip	9308880017	9308880017	9308880017	9308880017	
8	Switch Cover	9308882028	9308882028	9308882028	9308882028	
9	Protective Net	9312026012	9312026012	9312026012	9312026012	
10	4-Way Valve Assy	9312571017	9312571017	9312571017	9312571017	
11	Expansion Valve Assy	9312340019	9312340019	9312340019	9312340019	
12	Dryer	9312056002	9312056002	9312056002	9312056002	
13	Condenser	9312323012	9312323012	9312323012	9312323012	
14	Thermistor Spring-A	313728262708	313728262708	313728262708	313728262708	
15	Thermistor Spring	9300089012	9300089012	9300089012	9300089012	
16	Propeller Fan	9309909014	9309909014	9309909014	9309909014	
17	Nut	9304902003	9304902003	9304902003	9304902003	
18	Motor Bracket	9308872029	9308872029	9308872029	9308872029	
19	Separater	9312032013	9312032013	9312032013	9312032013	
20	Base Assy , Painted	9308869081	9308869081	9308869081	9308869081	
21	3-Way Valve Assy	9313067014	9313067014	9313067014	9313067014	
22	2-Way Valve Assy	9313062019	9313062019	9313062019	9313062019	
24	Cord Clamp	9307271014	9307271014	9307271014	93007271014	
25	Terminal	9306489038	9306489038	9306489038	9306489038	
26	Inverter PCB Assy	9704936035	9704936035	9704936028	9704936028	
27	TR PCB Assy	9704949035	9704949035	9704949035	9704949035	
28	ACTPM	9703457012	9703457012	9703457012	9703457012	
29	Fuse	0600036027	0600036027	0600036027	0600036027	
30	PTC	not available	not available	not available	not available	
31	Transformer	9705071018	9705071018	9705071018	9705071018	
32	Expansion Valve Coil	9900057015	9900057015	9900057015	9900057015	
33	Choke Coil	9703458019	9703458019	9703458019	9703458019	
34	Fan Motor	9601405030	9601405030	9601405030	9601405030	
35	Compressor Assy	9313192006	9313192006	9313192006	9313192006	
36	Emblem	9312633012	9312635016	9312633012	9312635016	
37	Heat Exchanger Thermistor	9704220028	9704220028	9704220028	9704220028	
38	Discharge Temp. Thermistor	9704219091	9704219091	9704219091	9704219091	
39	Solenoid Coil	9970033018	9970033018	9970033018	9970033018	

STANDARD ACCESSORIES

The following installation accessories are supplied.
Use them as required.

Name and Shape	Part No.	Q'ty	Name and Shape	Part No.	Q'ty
Wall hook bracket 	9312011018	1	Cloth tape 	9308117007	1
Remote control unit 	AWY14,17 9312226023 AWH14,17 9312226030	1	Tapping screw(big) (φ 4x20) 	0700076046	8
Battery 	0600185046	2	Tapping screw(small) 	0700019036	2
Remote control unit holder 	9310082010	1	Drain pipe (outdoor unit) 	9301102000	1



Большая библиотека технической документации

<https://splitsystema48.ru/instrukcii-po-ekspluatacii-kondicionerov.html>

каталоги, инструкции, сервисные мануалы, схемы.